



OCTOBER 1986						
S	M	T	W	T	F	S
			1	2	3	4
5	6	7	8	9	10	11
12	13	14	15	16	17	18
19	20	21	22	23	24	25
26	27	28	29	30	31	

# The Captain's Log

P. O. Box 97

Long Beach, MS. 39560  
*Member Gulf Yachting Association*

868-8229

### FROM THE BRIDGE:

The time is fast approaching for the Annual Meeting of the membership, election of officers, and presentation of report of Special Committee on Capital Improvements.

I feel that our club is at an important cross road. If we are to grow and prosper, I believe it is essential that we move forward with improvements so that we can enlarge our membership and increase our attendance at the club facilities, and the most important of the proposed improvements is the swimming pool.

I urge EACH OF YOU, whether you agree or not, to come to the annual meeting. Find out if the position of the nominees on these improvements is the same as yours, and provide input to the board so that the will of the majority will be made known.

DONALD R. RAYNER, M.D.  
Commodore

## YOUR VOTE IS IMPORTANT



# The Captain's Log

P. O. Box 97

Long Beach, MS. 39560  
*Member Gulf Yachting Association*

BULK RATE  
U.S. POSTAGE  
PAID  
LONG BEACH, MS  
PERMIT #17

COMMODORE . . . . . DONALD R. RAYNER  
VICE COMMODORE . . . . . CHARLES WEBB  
REAR COMMODORE . . . . . JACK MILLER  
FLEET CAPTAIN . . . . . BETTY D'AQUILLA  
FLEET SURGEON . . . . . DONALD L. ROBERTS, M.D.  
TREASURER . . . . . JOHN MONTGOMERY

#### BOARD OF GOVERNORS

ONE YEAR . . . . . TWO YEARS  
THOMAS E. BARRETT . . . . . JACK HOFFMAN  
DENNIS K. JONES . . . . . HOWARD KAPP  
PAT MAXWELL . . . . . DR. RICHARD LOVE  
ALEXANDER NORCROSS . . . . . BRUCE PAGE  
PAST COMMODORE . . . . . SAMUEL A. McCAULEY  
EDITOR . . . . . JEAN-ANN SWENSON



LADIES AUXILIARY

Our September meeting was held at Garden Park Hospital dining room. The dinner was fantastic with our choice of lobster or steak. I'm sure it was enjoyed by all.

Our speaker for the evening was Nancy Lucas of Decorating Den. It is a new concept in decorating and quite interesting. She gave a beautiful plant at a drawing and it was won by Delores Fennell.

We want to thank our hostesses Stephanie Bass, Pam Welch and Maxine Batey. Their door prizes were so nice and will be enjoyed by those who won - Lulla Bell, Norma Vance, Catherine Woodward, Lynne Boice, Lydia Rayner, Iris Montgomery, Clara Marie Mistler, and guest Karen Holmes Leach. Our "Lucky Lady" was Pam Welch.

Nancy Hoss has been appointed Chairman of the Nominating Committee for the selection of a slate of officers for the coming year.

We are hoping to have our sound proofing by Christmas Ball. We will be needing help so be expected to be called on. Marvin Allen has been so kind to help us with all the details.

Don't forget our October 21st craft show meeting to be held at the club. Ladies - get your crafts ready. See you there.

Nell Holmes, Secretary

P.S. If any of the members know of anyone that we'd like to send a card to for illness, etc. please call me and let me know. I don't want anyone to be overlooked, but I'm not always aware of the situations (452-4954). Thanks

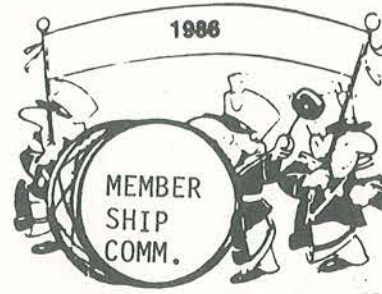


ENTERTAINMENT COMMITTEE: Thanks to Ron and Shelda Jones and all those who helped produce a great 50's party. Not only did they host a great party, but Shelda won the hula hoop contest.

Everyone please remember that the Walet Regatta is coming up the 10th and 11th. We are planning some fine things for this event and plan to have a band on Saturday. We hope to see a "whole bunch of your smiling faces there".

The John Montgomery's and daughter Suzette are hosting a halloween party. See details in newsletter.

Lydia Rayner



**CORRECTION:** Associate membership is for a single adult over 21 (not under 21 as the Sept. newsletter stated) The information and applications are at the club or call a member, Commodore Don Rayner, board member of the membership committee.

It's election time again and each member should attend this very important meeting to elect the Flag Officers and board members. One vote per membership, which may be cast by either husband or wife.

Remember, that even though a private party is being held in the ballroom, the lounge is always open to members.

LOUISE RECTOR

**PROSPECTIVE MEMBERS:** John H. and Starr Chapman  
706 S. Beach, Waveland, MS  
Occupation: Chappy's Restaurant, LB



**HALLOWEEN PARTY.....**

The Long Beach Yacht Club will have a halloween party Friday, October 31, 1986 from 7:30 PM till.....Complete with Worst Trophy for Best Costume, games, prizes, and snacks. Liquid refreshments in the "punch" variety will be provided and the bar will be open for those who indulge in more potent libations. There is no admission charge, but all who attend must be in costume.



Bring your family, friends, potential members, and anyone else you can drag off the streets. For a really good time call the club (868-8229) and give a head count of the people you plan to bring. Please, only one head per person



RACE & SAIL COMMITTEE:

NOTICE!NOTICE! NOTICE! LBYC WALET REGATTA - OCTOBER 11th & 12TH

This regatta is a Gulf Yachting Assn. event and we will be hosts to members of other clubs, as well as our own. We will have fine entertainment, good food and comradarie as well as competitive races. All members are encouraged to make plans and attend this two day event, whether as spectators or participants. There will be all classes of boats from off-shore to prams.

The Lipton Cup Races were held Labor Day weekend at So.YC in New Orleans. Three GYA clubs were represented. LBYC finished in 18th place overall in this four race event. Team captain was David Wyatt. Skippers were Jeremy Christ, Andy Christ, Bob Christ and Holly (D'Aquilla) Murray. Crew members were Jud Williams, Betty Kohrman, Bruce Bricker, Kathy Sirokman, Sam McCauley, Vivian Miller and Caryn Sirokman. Supporters were Jack Miller, Carol Sirokman and Gene Kohrman with the "No Problem" also in attendance.

LBYC capdeville team at the Monk Smith Regatta, BWYC were Kathy Sirokman, Bob Christ and David Wyatt. Sailing in the open class was Skipper Holly Murray with crew Betty Kohrman and Carol Sirokman. BWYC will also be the site of next year's Lipton Cup Regatta. Sailors --- let's all get out and get plenty of experience for next year.

We are still looking for used Optomist Prams for our younger sailors. Please let us know if you see or hear of one for sale. (864-4108)

- OCT 4 Great Ship Island Race (each Miss. Coast Club has its own start). Race to Ship Island
- OCT 11-12 Walet Regatta, LBYC (one design and off shore)
- OCT 18-19 F/S Masters, GYC & off shore (no one under 35 - sorry kids)
- OCT 24 GYC to PCYC - off shore
- OCT 25-26 Frost Bite, PCYC
- F/S Cock of the Walk & off shore

(The "one time committee" hosted a very enthusiastic, though small group, of scavengers for the hunt held at the club on Saturday, Sept. 13-th. Winners were: Les & Pat Newcomb, Charlie & Louise Rector; door prize winners - Ron Jones, Debbie Pierocich, Susan Gilbert, Louise Rector and Ron's father. Thanks to all participants & observers for a good time. Hope more of you will share the fun at future events)

Betty Kohrman  
Chairman



TREASURER'S REPORT:

On August 31, 1986, we had \$6,433.50 in our general fund bank accounts, compared with \$4,679.15 in the same accounts a year ago. In addition, there is a balance of \$4,984.83 in our bond redemption account compared with \$4,685.07 a year ago. The balance in the House Committee account and in the Juniors Savings account are not included in these totals.

Our deposits of new member fees through August are \$2,910 compared to \$6,150 this date last year. Our deposits of member dues total \$31,416.42 compared to \$27,676.75 this date last year. Our total general fund deposits this year are \$36,475.42 compared to \$35,190.15 last year. So, we seem to be holding our own, treading water financially.

There are several financial squalls on the horizon. There will be 50 member bonds to be redeemed in about two years...\$50,000. We have about \$5,000 in the Bond Retirement account. Then, there will be another 50 member bonds due in 7 years - \$50,000. Then a final 37 bonds in 12 years...\$37,000.

Each member needs to realize that we must recruit more members...and he or she must patronize the events at LBYC if the club is to be successful. The club is for all the members, and must have the enthusiastic support and participation of all members if we are to prosper and improve our facilities.

How many new members have you signed up this year? No activity can succeed without volume. So, it's up to you...and now is the time!

JOHN MONTGOMERY  
Treasurer

Sunshine



Our newsletter editor, Jean-Ann Swenson has recently had surgery and is at home recuperating.

We wish her a speedy recovery!

ATTENTION

If you move or change your address, please let us know so that we can keep our records current and also so you will continue to receive your newsletter.

There are forms available at the bar for this purpose. You can also call membership director

HOUSE COMMITTEE

MENU: Every Thursday night - seafood platter (shrimp, oysters and catfish)  
Every Friday night - Hamburgers/trimmings

**Special Notice:**

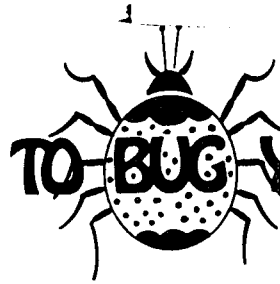
Every Saturday night in October, we are drawing a member's name for a bar tab of \$10.00. The bar tab will accumulate if member is not present when name is drawn. Right now, it is up to \$40.00 and it is conceivable that it could go as high as \$80.00 by the end of October. We started this in September and LOOK WHO LOST BY NOT BEING PRESENT WHEN NAME WAS DRAWN: Jack Mincher lost \$10.00; Larkin Smith lost \$20.00 and Johnny Odom lost \$30.00. The names are drawn at 9 PM on Saturday nights, so why don't you plan to be present and see if your name will be next.



"Where's the beef?!"

and LOOK WHO LOST BY NOT BEING PRESENT WHEN NAME WAS DRAWN: Jack Mincher lost \$10.00; Larkin Smith lost \$20.00 and Johnny Odom lost \$30.00. The names are drawn at 9 PM on Saturday nights, so why don't you plan to be present and see if your name will be next.

**WE HATE TO BUG YOU ..... BUT**



We need input from the members for planning. We are considering serving seafood and steaks on Friday nights and hamburgers and pizza on Saturday nights. If we do this, the Thursday night dinners would be eliminated. We would like to have you vote on this. Simply put THURSDAY/FRIDAY NIGHT or FRIDAY/SATURDAY NIGHT, sign your name and drop it in suggestion box located in the bar. Please sign your name so that we will know it is a legitimate vote.

The Walet Regatta is this month and we will have some good food for you. On Saturday the 11th there will be po' boys for lunch and shrimp fettucine will be served for evening meal. Then on Sunday, the 12th, there will be a fried chicken dinner. In addition to this, October 5th, there will be free red beans and rice from 3-6 PM and you can watch the game.

On Halloween, the 31st, which happens to be a Friday night, we will serve hamburgers as usual, but will extend the serving hours to 9 PM.



**OCTOBER**

MONTH: <b>OCTOBER</b> 19						
SUNDAY	MONDAY	TUESDAY	WEDNESDAY	THURSDAY	FRIDAY	SATURDAY
[ ]	[ ]	[ ]	[ 1 ]	[ 2 ] Seafood platter	[ 3 ] Hamburgers	[ 4 ] Great Ship Is. Race *9PM drawing at club for bar tab
[ 5 ] Free red beans and rice 3-6 PM	[ 6 ]	[ 7 ]	[ 8 ] Flag Officers meeting	[ 9 ] Seafood platter	[ 10 ] Hamburgers	[ 11 ] WALET REGATTA. Po boys, shrimp fettucine, entertainment (live band) *9PM drawing for bar tab
[ 12 ] WALET REGATTA continues Fried chicken dinner	[ 13 ]	[ 14 ] ANNUAL MEMBER-SHIP MEETING 7 PM (Election of officers)	[ 15 ] Board of Governors meet. 7 PM	[ 16 ] Seafood platter	[ 17 ] Hamburgers	[ 18 ] F/S Masters, GYC & off shore *9PM drawing for bar tab
[ 19 ] F/S Masters continues	[ 20 ]	[ 21 ] Ladies Aux. meeting and craft show	[ 22 ]	[ 23 ] Seafood platter	[ 24 ] Hamburgers GYC/PCYC off shore	[ 25 ] Frost Bite Regatta F/S Cock of the Walk & Offshore *9PM drawing for bar tab
[ 26 ] Frost Bite Regatta continues	[ 27 ]	[ 28 ]	[ 29 ]	[ 30 ] Seafood platter	[ 31 ] Hamburgers Halloween Party	[ ]

**CLUB HOURS**

Closed Mon. & Tues.  
Wednesday 4-10pm  
Thursday 4-10pm  
Friday 4-12am  
Saturday 12-12am  
Sunday 2-8pm

